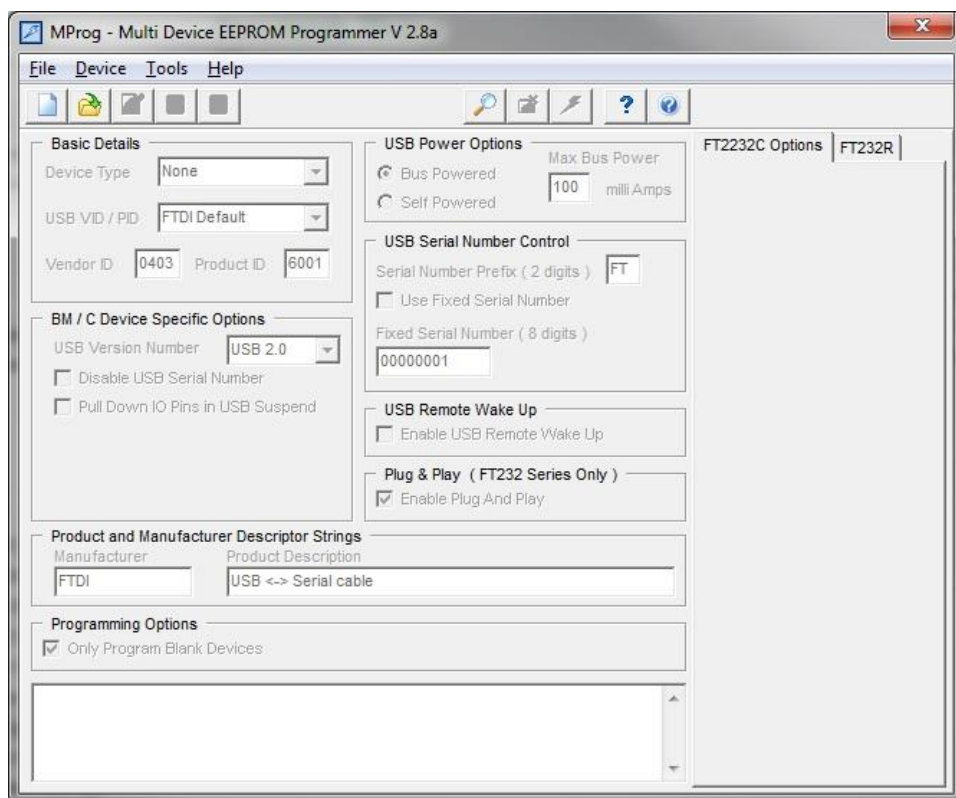


ChronoTrack

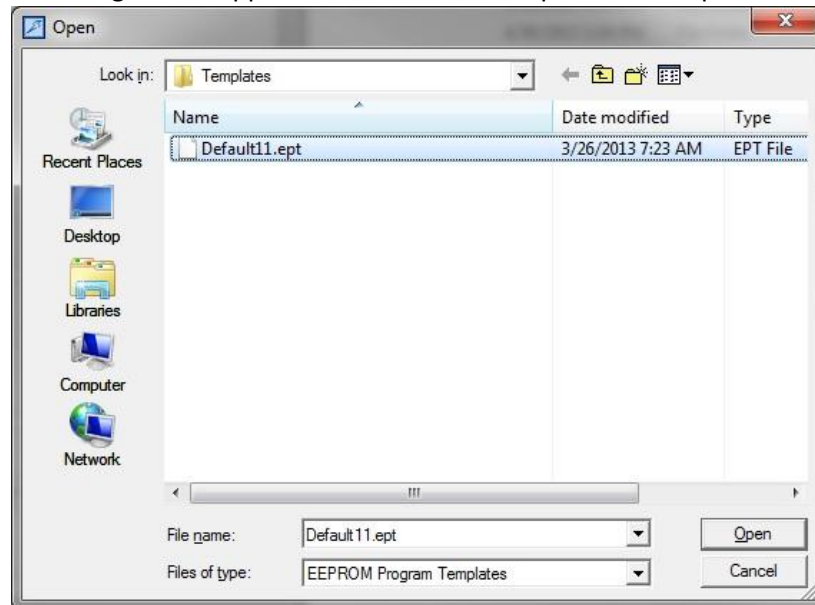
RFID Block Windows 8 Driverless Firmware Update

PREREQUISITE: The RFID Block must be recognized by the computer running the firmware update. For this, please see **setup instructions for Windows 7 and Windows 8.**

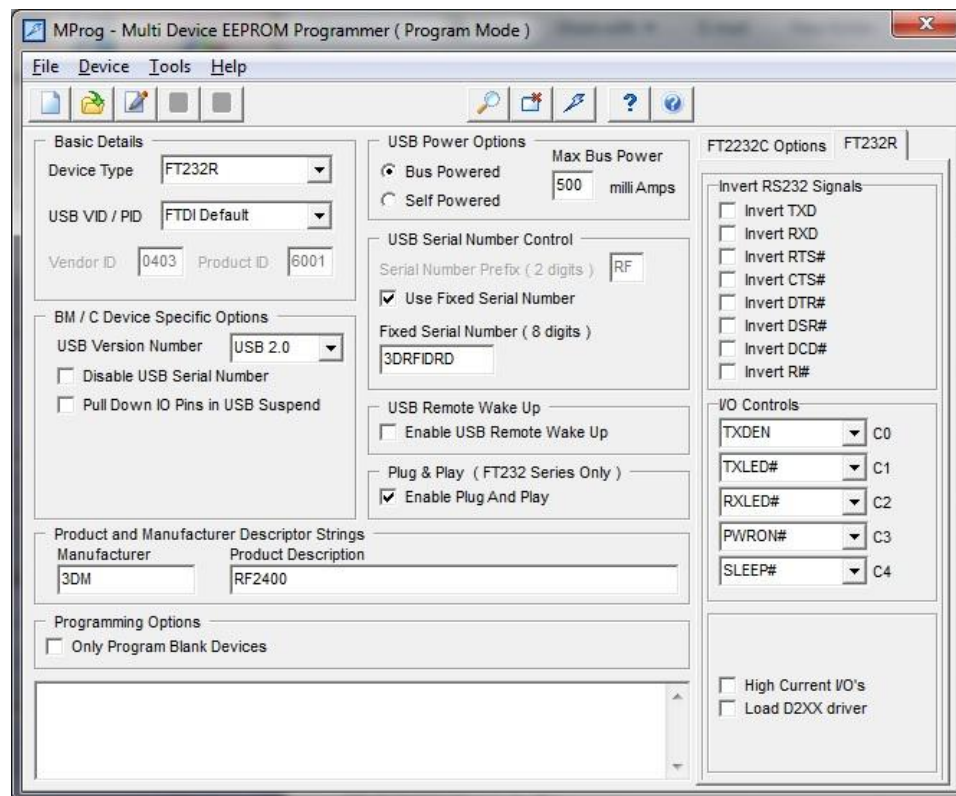
1. Go to <https://secure.chronotrack.com> ---> Downloads --> Firmware --> RFIDBlock
2. Download RFIDBlock-DriverlessUpdate.zip to your PC.
3. Unzip file, should have folder RFIDBlock-DriverlessUpdate.
4. Go into RFIDBlock-DriverlessUpdate\MProg and dbl click on MProg.exe



5. Click File--> Open and file dialog should appear. Select Default11.ept and click Open.



6. MProg should now display:



7. Plug RFID Block into PC.

8. Click Device --> Scan, form should now display:

MProg - Multi Device EEPROM Programmer (Program Mode)

File Device Tools Help

Basic Details

Device Type: FT232R

USB VID / PID: FTDI Default

Vendor ID: 0403 Product ID: 6001

BM / C Device Specific Options

USB Version Number: USB 2.0

☐ Disable USB Serial Number

☐ Pull Down IO Pins in USB Suspend

USB Power Options

☒ Bus Powered Max Bus Power: 500 milliAmps

☐ Self Powered

USB Serial Number Control

Serial Number Prefix (2 digits): RF

☒ Use Fixed Serial Number

Fixed Serial Number (8 digits): 3DRFIDRD

USB Remote Wake Up

☐ Enable USB Remote Wake Up

Plug & Play (FT232 Series Only)

☒ Enable Plug And Play

Product and Manufacturer Descriptor Strings

Manufacturer: 3DM Product Description: RF2400

Programming Options

☐ Only Program Blank Devices

Number Of Blank Devices = 0

Number Of Programmed Devices = 1

FT2232C Options FT232R

Invert RS232 Signals

☐ Invert TXD

☐ Invert RXD

☐ Invert RTS#

☐ Invert CTS#

☐ Invert DTR#

☐ Invert DSR#

☐ Invert DCD#

☐ Invert R#

IO Controls

TXDEN: C0

TXLED#: C1

RXLED#: C2

PWRON#: C3

SLEEP#: C4

☐ High Current IO's

☐ Load D2XX driver

9. Click Device --> Erase, form should now display:

MProg - Multi Device EEPROM Programmer (Program Mode)

File Device Tools Help

Basic Details

Device Type: FT232R

USB VID / PID: FTDI Default

Vendor ID: 0403 Product ID: 6001

BM / C Device Specific Options

USB Version Number: USB 2.0

☐ Disable USB Serial Number

☐ Pull Down IO Pins in USB Suspend

USB Power Options

☒ Bus Powered Max Bus Power: 500 milliAmps

☐ Self Powered

USB Serial Number Control

Serial Number Prefix (2 digits): RF

☒ Use Fixed Serial Number

Fixed Serial Number (8 digits): 3DRFIDRD

USB Remote Wake Up

☐ Enable USB Remote Wake Up

Plug & Play (FT232 Series Only)

☒ Enable Plug And Play

Product and Manufacturer Descriptor Strings

Manufacturer: 3DM Product Description: RF2400

Programming Options

☐ Only Program Blank Devices

Erase successful Device 0

FT2232C Options FT232R

Invert RS232 Signals

☐ Invert TXD

☐ Invert RXD

☐ Invert RTS#

☐ Invert CTS#

☐ Invert DTR#

☐ Invert DSR#

☐ Invert DCD#

☐ Invert R#

IO Controls

TXDEN: C0

TXLED#: C1

RXLED#: C2

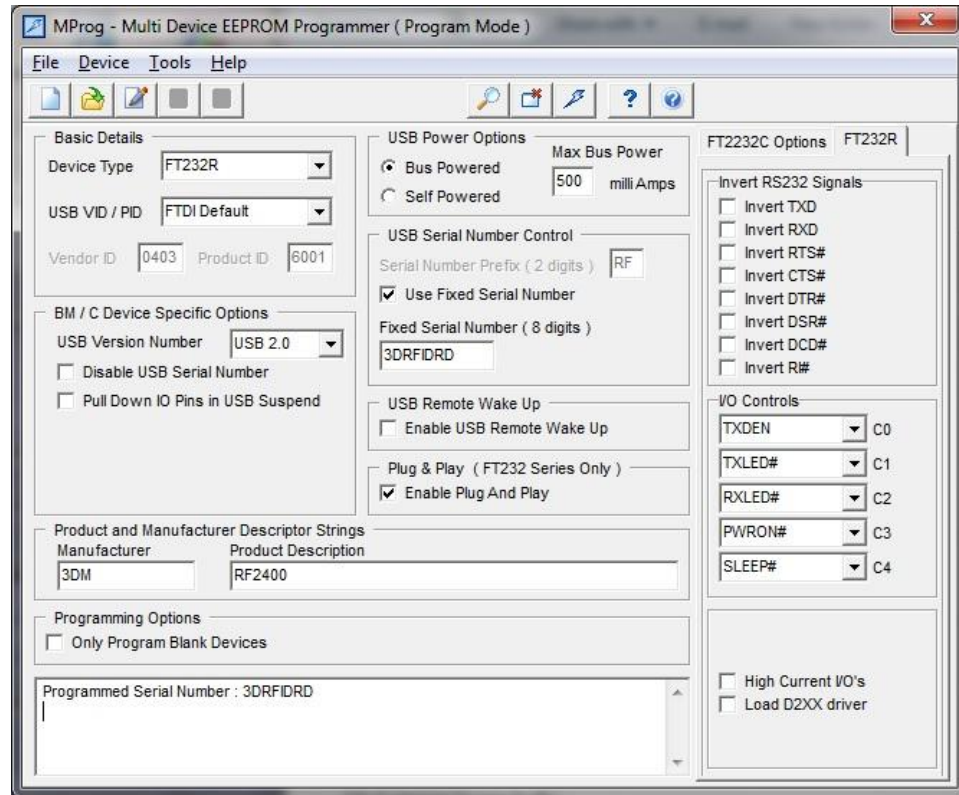
PWRON#: C3

SLEEP#: C4

☐ High Current IO's

☐ Load D2XX driver

10. Click Device --> Program, form should now display:



11. Close MProg.exe, unplug RFID Block, then plug it back into PC. RFID Block should now work without drivers.
12. If drivers are required (non-Win 8), open Device Manager, update driver and explore to folder RFID_Block_Driver-2.08.28.